

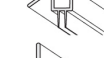
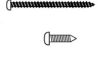
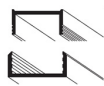
**PARTS LIST**

ITEM PART	DESCRIPTION	QTY
<b>A</b> ZSS-4506	Wall Jamb	1
<b>B</b> ZSS-4505	Hinge Jamb	1
<b>C</b> CHG HGTW*	Glass Hinge	2
<b>D</b> CHG BTB	Back-to-Back Pull	1
<b>E</b> CMFANCHOR	Plastic Anchors	6
<b>F</b> #10 x 2"	Wall Jamb Screws	8
<b>G</b> #8 x 3/4"	Hinge Jamb to Wall Jamb Screws	5
<b>H</b> #10 x 3/4"	Heavy Glass Hinge to Post Screws	8
<b>J</b> ZV-969	Adjustable Post Cap	1
<b>K</b>	3/8" Clear Glass Door	1

**OPTIONAL COMPONENTS:**

<b>L</b> CHGP982	Bottom Sweep	1
<b>M</b> CHGP976	Angle Seal (Optional)	1
<b>N</b> CHGP972	Bulb Seal (Optional)	1

\* Standard hinge part number listed. Reference original order PO for replacement parts.  
Hinge styles may vary.



**IMPORTANT NOTE:**

Door should not be used for 72 hours in order to let silicone cure properly.

**NOTE:** If you are installing an unit with a DOOR & PANEL, please use that set of instructions.

When ordering repair parts, please provide the following information:

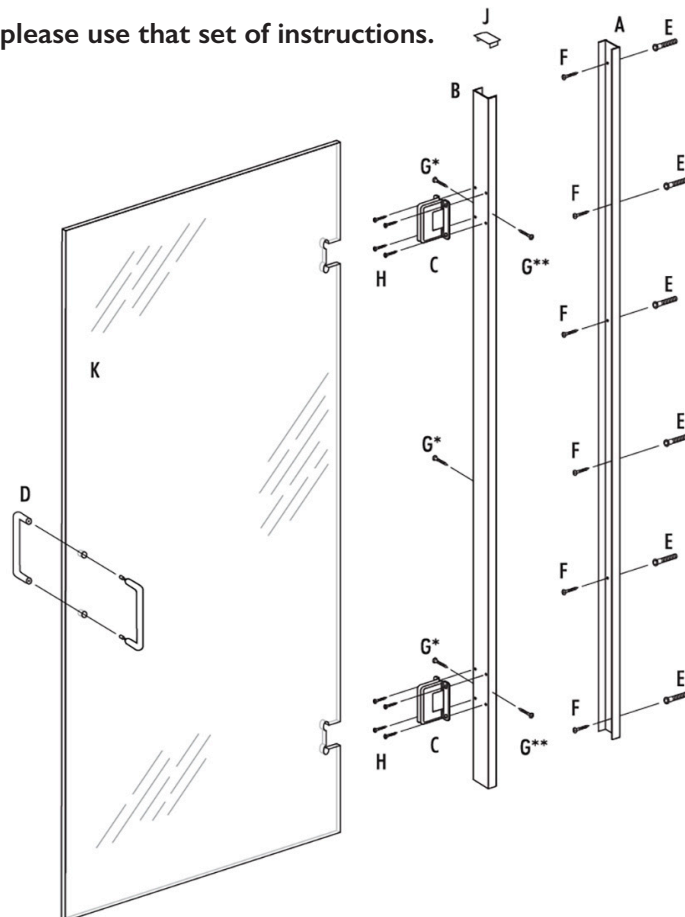
1. Model Number
2. Part Number
3. Part Description
4. Finish Color

**Required Tools:**

• **TWO PEOPLE**

- Pencil
- Tape Measure
- Electric Drill
- Phillips Head Bit
- Scissors
- Level
- Flat Head Screwdriver
- Hammer
- Silicone
- Painters or Masking Tape
- 1/8" and either 3/16" or 1/4" Drill Bits\*

\* Select the proper drill bits for your installation conditions  
(i.e. tile, porcelain, marble, etc)



## IMPORTANT

**GENERAL INFO:**

- Please take a few minutes and thoroughly read the instructions before you start the installation.
- **YOU WILL NEED TWO PEOPLE** to install this unit
- If, at any point in the installation, you have questions, please contact the dealer through whom you purchased this enclosure.
- **FAILURE TO FOLLOW THE INSTRUCTIONS COULD RESULT IN SERIOUS INJURY, DAMAGE OR DEATH.** Not to scare you, but you need to take this seriously.

**BEFORE YOU START YOUR INSTALLATION:**

- Purchaser is responsible for observing all local plumbing and building codes. Please consult your local building codes and compliance standards before installation to ensure conformity.
- We recommend that this enclosure be installed into secure wall studs on the door hinge side. However, it should work fine if installed into a solid substrate (such as sheet rock board or green board) with the appropriate wall anchors. A fiberglass unit with nothing behind it is not suitable for mounting a TRU-FIT enclosure.
- Make sure your enclosure is the proper size for your opening.
- This enclosure is designed to handle minor out-of-plumb wall conditions and mildly uneven sill conditions. If either of your walls are more than 1/2" out-of-plumb, this unit is not suitable for your conditions.
- If the sill is not level, there could be some variances in the spacing between sill and door. It will be very **IMPORTANT** that you note these outages precisely and adjust the spacing of the glass off the sill accordingly so that the glass **CANNOT** hit the sill while in operation.
- Make sure you have all the proper tools. The installer is responsible for selecting the appropriate drill bits for the installation surface conditions.
- If you are installing on freshly laid tile, allow enough time for the tile cement and grout to fully dry before installing the shower enclosure.

**DISCLAIMERS:**

- HMI Shower Enclosures is in no way responsible for any damage or bodily injury caused by an improper installation. Failure to follow these instructions, guidelines and warnings will void your warranty, and possibly cause anything from minor water damage to serious injury or death.
- These units have been tested under extreme usage conditions and have not failed **WHEN PROPERLY INSTALLED**.

**WHEN YOU START YOUR INSTALLATION:**

- Carefully remove all the enclosure parts and components from the packaging and keep the packaging until the installation is complete. Inventory all the parts and inspect them for damage. If any of the parts are damaged, please contact your local distributor.

**AFTER INSTALLATION:**

- For the first 72 hours after installation, do not operate the door or use the shower. This will allow time for the silicone to cure properly.
- Save this manual for future references.

**ITEMS LISTED AS OPTIONAL:**

- The two screws for the outside of the unit to secure the hinge jamb to the wall jamb are **HIGHLY RECOMMENDED** to reduce movement and provide a truly stable door.
- Three different polycarbonates are provided to help prevent water from escaping the shower. It is up to the installer/owner to determine if these are necessary.

**CARE AND MAINTENANCE:**

- Do not use harsh cleaners on your enclosure, as these can scratch or otherwise damage your enclosure.
- The shower enclosure can remain beautiful for years with the proper care. Some items, such as polycarbonates, may need to be replaced over time when they show signs of wear, are yellowing, or are not as functional in holding back water.
- Water conditions vary, and may necessitate extra cleaning of your enclosure.
- We recommend that you wipe down your shower enclosure with a cloth or squeegee after each use.

**TROUBLESHOOTING:**

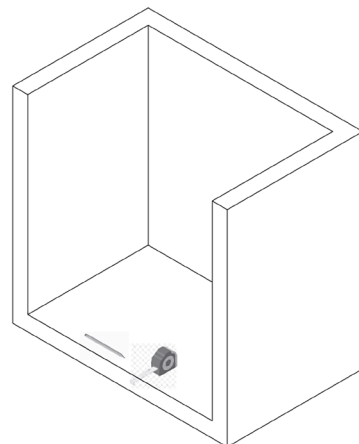
- For troubleshooting various installation issues, see at the end of these instructions.

## CAUTION

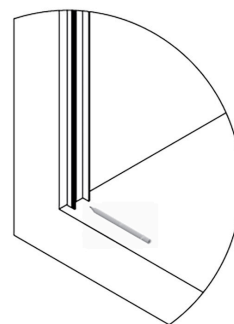
The TRU-FIT Shower Enclosure is made of tempered glass. While tempered glass is strong, if one edge is hit too hard or something else happens it can break. Tempered glass is designed to shatter into small pieces, like automobile windows, but they can still be dangerous. Take care when handling the glass.

**STEP 1**

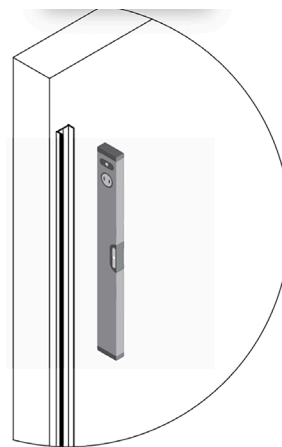
Determine center line of your shower base by measuring the thickness of the base and use a pencil to mark the center. (See Figure 1)

**FIGURE 1****STEP 2**

Take the Wall Jamb (A) and line the center of it (indicated by the line) up with the center line of tub base found in Step 1. The post should be sitting on the tub or shower base. (See Figure 2)

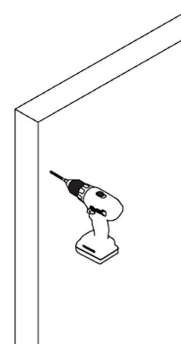
**FIGURE 2****STEP 3**

Make sure that the Wall Jamb (A) is level before marking for holes. (See Figure 3)

**FIGURE 3****STEP 4**

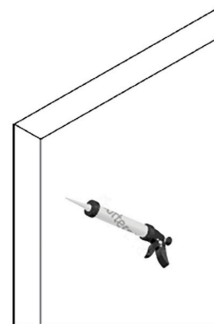
Once the Wall Jamb (A) is level, use a pencil to mark the holes for drilling. Depending on the support behind the wall, if unsure, use Plastic Anchors (E) may or may not be required. If you are unsure, use the Plastic Anchors (E) to be safe. If using an anchor, use 1/4" drill bits to drill holes on the specified marks. If wooden support is present and no anchor is required, use 3/16" drill bits to drill holes on specified marks. (See Figure 4)

Note: You may need several drill bits when drilling through certain types of tile or marble. Keep your drill bit cool by spraying with water throughout the drilling process.

**FIGURE 4**

### STEP 5

Put a small amount of silicone in each hole drilled. Place Plastic Anchors (E), if needed, in holes and gently tap with hammer. Be sure not to hit tile. (see Figure 5)

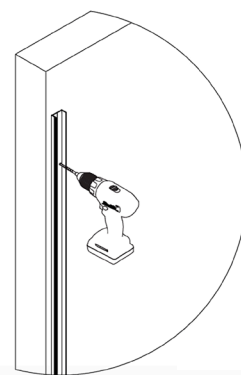


**FIGURE 5**

### STEP 6

Set the Wall Jamb (A) in place and make sure holes line up. Using six #10 x 2" Wall Jamb Screws (F) provided, attach Wall Jamb (A) to wall. (See Figure 6)

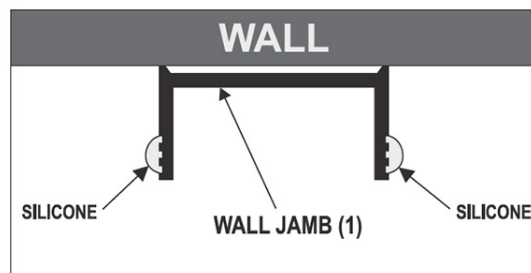
NOTE: Two extra screws (F) are provided in case of installation issues.



**FIGURE 6**

### STEP 7

Once all six #10 x 2" Wall Jamb Screws (F) are securely in place, apply bead of silicone to the outside ribbed edge of Wall Jamb (1) running the entire length of both sides. (See Figure 7)



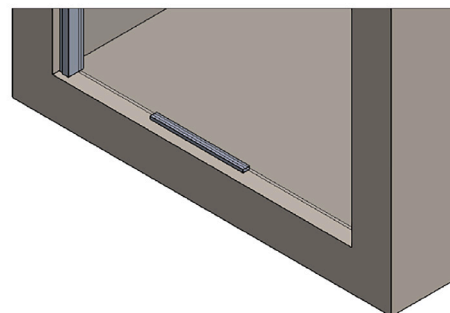
**FIGURE 7**

### STEP 8

Set 7/16" spacer on center of base for spacing and safety. Set door on top of spacer and position Hinge Jamb (B) over the Wall Jamb (A).

**Using two people (1 person inside, 1 outside),** slide Hinge Jamb (B) over Wall Jamb (A) carefully until fully compressed. (See Figure 8) Wood Block should still be under the Glass Door (K).

**Once completed, DO NOT LEAVE DOOR UNATTENDED, IT COULD STILL FALL!**

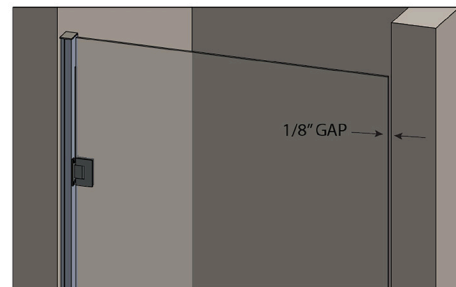
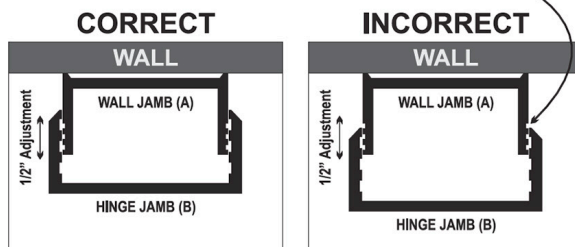


**FIGURE 8**

### STEP 9

While one person steadies the door, the other should gently pull door out towards opposite wall so that the handle side edge of the glass is within 1/8" from wall. Make sure that the 1/8" gap is uniform the entire length of the door. (See Figure 9)

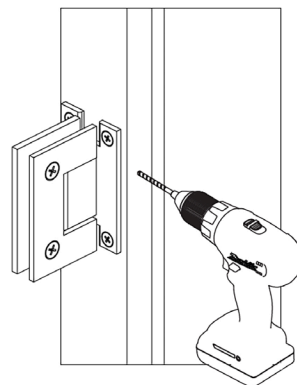
**IT IS IMPORTANT TO MAKE SURE THAT HINGE JAMB (B) IS NOT PULLED SO FAR OFF WALL JAMB (A) THAT RIBBED AREA IS SHOWING.**



**FIGURE 9**

### STEP 10

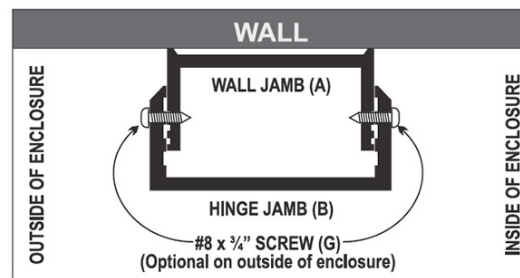
Once adjusted, and the other person is holding the door steady, take a 1/8" drill bit and place in pre drilled holes on Hinge Jamb (B). Drill three pilot holes through the Wall Jamb (A). (See Figure 10)



**FIGURE 10**

### STEP 11

Install three #8 x 3/4" SelfTapping Screws (G) into the pilot holes drilled. (See Figure 11)



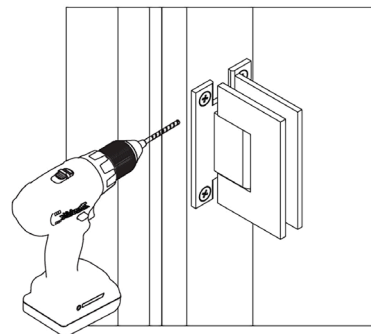
**FIGURE 11**

## STEP 12

We have supplied two extra #8 x 3/4" SelfTapping Screws (G).

WE RECOMMEND PUTTING THESE ON THE OUTSIDE OF THE UNIT FOR EXTRA SUPPORT.

These are not necessary, but highly suggested to eliminate any movement during usage. Using a 1/8" drill bit, drill two pilot holes through both the Hinge Jamb (B) and the Wall Jamb (A) centered vertically with the Door Hinges (C). (See Figure 11 and 12)



**FIGURE 12**

## STEP 13

Apply a bead of silicone where the Wall Jamb (A) meets the wall on **BOTH** sides. (See Figure 13)



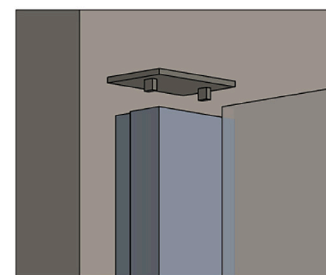
**FIGURE 13**

## STEP 14

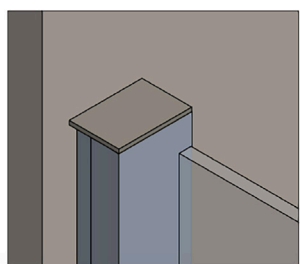
The Adjustable Post Cap (J) covers the exposed top of the Wall Jamb (A) and Hinge Jamb (B). Set the cap in place **BACKWARDS** (only to mark it for cutting) with the legs going in Hinge Jamb (B) (See Figure 14A) and mark for cutting (See Figure 14B).

Make sure cap is touching back wall before marking.

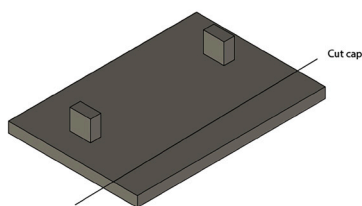
Cut cap on marking using scissors. (See Figure 14C). Place drop of silicone on the outside of both legs. (See Figure 14D). Turn the Adjustable Post Cap (J) around and install with the legs going into the Wall Jamb (A). (See Figure 14E). Remove spacer and clean up any excess silicone.



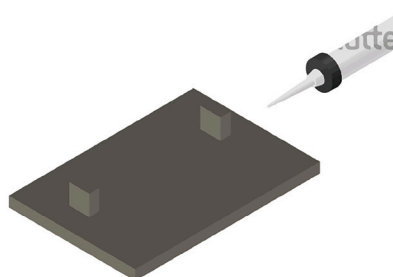
**FIGURE 14A**



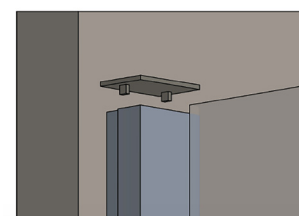
**FIGURE 14B**



**FIGURE 14C**



**FIGURE 14D**

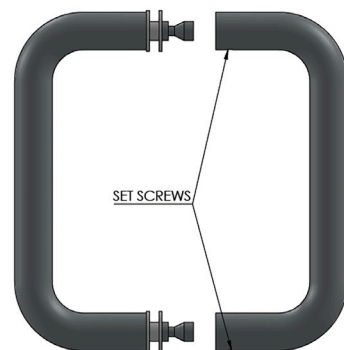


**FIGURE 14E**

**STEP 15**

To attach the Back-to-Back C-Pull (D), first loosen set screws with an allen wrench and take the pull apart. (See Figure 15)

NOTE: The pull is mounted so that there is no metal touching glass. The clear plastic washers go on either side of the glass between the pull and the glass.



**FIGURE 15**

**STEP 16**

Place handle through holes in the Glass (K). Make sure that the clear washers are touching the glass. Gently tighten the handle screws so that handle is snug on glass. **DO NOT OVER-TIGHTEN THE SCREWS** with the allen wrenches supplied with the pull. Over-tightening can crack the washers. (See Figure 16A)

Place other side of handle on studs (See Figure 16B) with set screws facing down and tighten using allen key provided. (See Figures 16C and 16D)

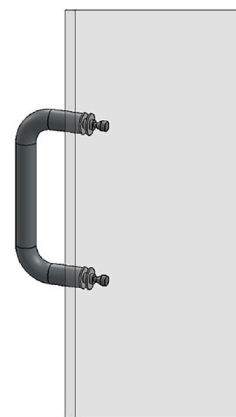
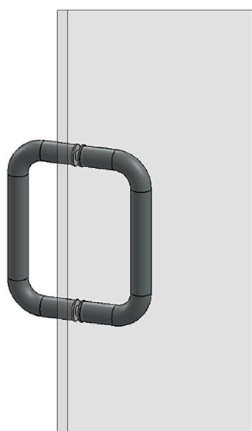


Figure 16A

**FIGURE 16A**



**FIGURE 16B**



**FIGURE 16C**



**FIGURE 16D**

**IMPORTANT  
NOTE**

**DOOR SHOULD NOT BE USED FOR 72 HOURS  
IN ORDER TO LET SILICONE CURE PROPERLY!**

**STEP 17**

There are three different polycarbonates provided. All are **OPTIONAL** and serve to help prevent water from escaping shower.

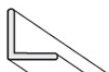
**NOTE:** If using the optional polycarbonates, for the best adhesion, clean glass or tile with alcohol before application.



**ZV 982 Bottom Sweep (L)** - This is attached by pressing it on bottom of door while door is open. Wood block should have been removed. (See Figure 17A)

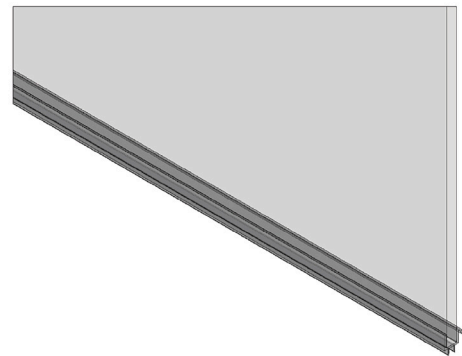


**ZV SDTB Bulb Seal (N)** - This is to be placed on hinge edges of glass. You will need to cut into 3 pieces that will fit the small areas from top hinge to top of door; bottom hinge to bottom of door and the large area between hinges. Remove red covering to expose adhesive and apply to edge of glass. (See Figure 17B)

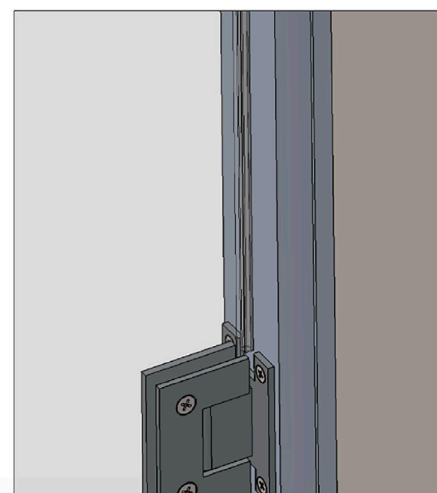


**ZV Angle Seal (M)** - This is to be placed on handle side of door, **DIRECTLY** to the tile (make sure tile is clean and dry before application). Place door in closed position and lightly mark with pencil in several different locations where the outside edge of glass meets tile (See Figure 17C). Remove red covering (See Figure 17D) and apply seal to tile evenly up and down wall, following pencil marks.

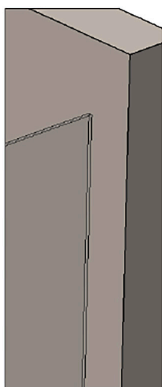
**CAUTION:** By using this angle seal, your door will no longer be able to swing both in and out. (See Figure 17E)



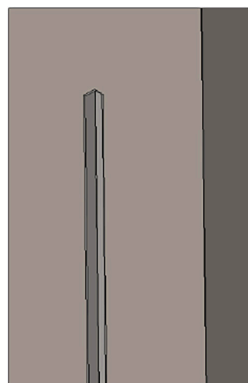
**FIGURE 17A**



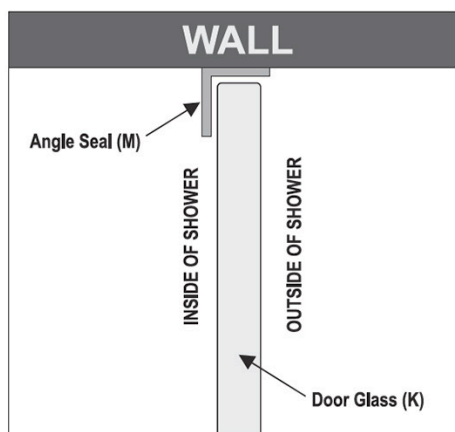
**FIGURE 17B**



**FIGURE 17C**



**FIGURE 17D**



**FIGURE 17E**



## TROUBLESHOOTING

### INSTALLATION:

If, while preparing to attach the Hinge Jamb (B) to the Wall Jamb (A), you are unable to get a consistent 1/8" gap between the Door Glass (K) and will without revealing the groove lines on the Wall Jamb (A), either your walls may be seriously out of plumb or your selected unit might not be the right size for your conditions. Double check your wall conditions and measurements.

### OPERATION:

If you have not installed the #8 x 3/4" Set Screws (G) on the outside of the enclosure securing the Hinge Jamb (B) to the Wall Jamb (A), and you are noticing movement of the door jamb during normal operation, we strongly suggest you go to Step 12 and install the Set Screws (G) on the outside of the enclosure.

## WARRANTY CLAIMS

To make a claim under the provisions of this warranty, please contact your local HMI Shower Enclosure dealer. They should be able to solve any problem you might have.

If your dealer cannot solve your problem, they will contact your local HMI Shower Enclosure distribution center:

If you are unable to obtain warranty service through your local HMI Shower Enclosure distribution center, you can contact us at:

HMI  
4795 Shepherdsville Road  
Louisville, KY 40218 USA  
email: [info@hmiglass.com](mailto:info@hmiglass.com)

Please include all relevant information regarding your claim:

- The model which was installed.
- The name and address of the installer.
- The installation address.
- A complete description of the problem.
- A photocopy of your invoice/receipts for the product installed.

Under no circumstances should HMI Shower Enclosures products be returned to your dealer, distributor, or the HMI Shower Enclosures without a written Return Merchandise Authorization (RMA).